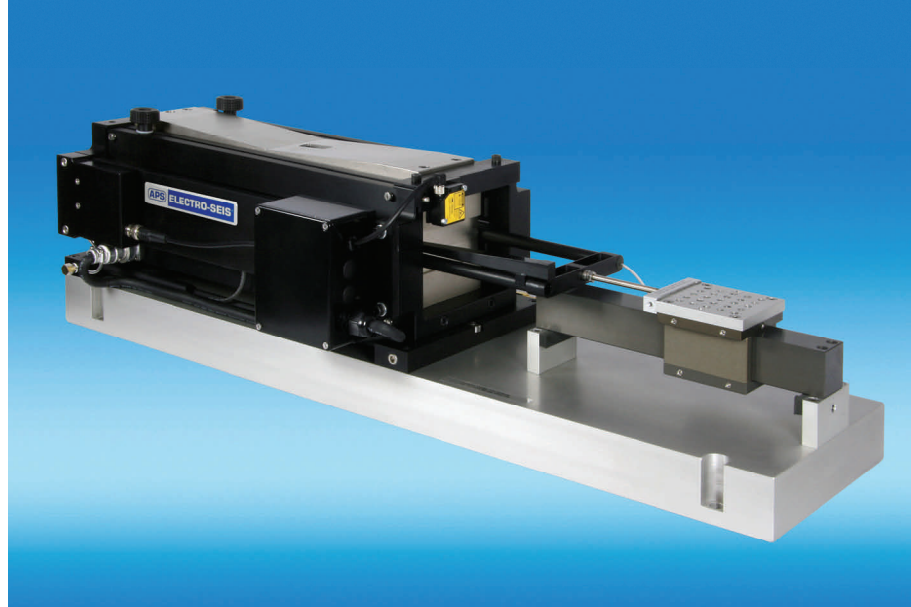


APS 500 ELECTRO-SEIS®

Long Stroke Shaker with Air Bearing Load Mounting Table



Applications

The APS Model 500 Horizontal Shaker is a long stroke electrodynamic force generator coupled to a lightweight horizontal table. The shaker provides long stroke, low frequency excitation of components, accelerometers and other instruments and sensors.

Features

- 20-lb, 90-N vector force
- 3.13 x 3.13-in, 79.5 x 79.5-mm load mounting table
- Air bearing guidance and support system carries up to 6-lb, 2.7-kg test load with very low cross-axis motion
- Efficient electrodynamic driver produces sine, random or transient waveforms
- Excellent waveform purity, typically less than 1 % THD

APS 500 ELECTRO-SEIS®

Long Stroke Shaker with Air Bearing Load Mounting Table

Description and Characteristics

The Model 500 Horizontal Shaker consists of a load mounting table and air bearing assembly driven by a Model 113-AB-LA **ELECTRO-SEIS®** long stroke air bearing shaker. The shaker provides horizontal base excitation to items mounted on the table.

Static and dynamic transverse loads are transferred through a large area precision air bearing to a rigid guide bar of square cross section. The driver unit and guide bar are mounted on a common rigid base, ensuring correct alignment of all moving parts. The standard hole pattern consists of 25 threaded holes in a 5 x 5 array. Optional metric threads and spacing are available.

The Model 113-AB-LA driver unit uses permanent magnets and is configured such that the armature coil remains in a uniform magnetic field over the entire stroke range ensuring a high degree of linearity. The self-cooled armature coil requires power from a matching electronic power amplifier.

Performance

Acceleration performance charts of the **APS 500 ELECTRO-SEIS®** shakers will be provided on request.

Specifications

Model	APS 500
Max. Force Sine Peak	90 N (20 lbf)
Max. Stroke	152 mm (6.0 inch)
Frequency Range	DC ... 200 Hz
Operation	horizontal or vertical
Armature Weight	1.2 kg (2.6 lb)
Max. Payload	Horizontal Vertical
	2.7 kg (6.0 lb) 1.3 kg (2.9 lb)
Impedance	1.2 Ω
Air Pressure Required	4 bar (60 psig)
Air Flow Required	650 l/h (0.4 cfm)
Total Shaker Weight	64.0 kg (141.1 lb)
Overall Dimension L x W x H	813 x 219 x 210 mm (32 x 8.6 x 8.3 inch)
Load Table Size L x W	79.5 x 79.5 mm (3.1 x 3.1 inch)
Operating Temperature	5 ... 40 degrees C
Storage Temperature	-25 ... 55 degrees C

Accessories (optional)

Model	APS 500
Amplifier	APS 125
System Cable for Connection Shaker to Amplifier	0082-6E
Zero Position Controller for Vibration Exciters	0109
Vertical Mounting Kit / Vertical Operation Kit	5002

Additional accessories available

All data are subject to change without notice

May 2009